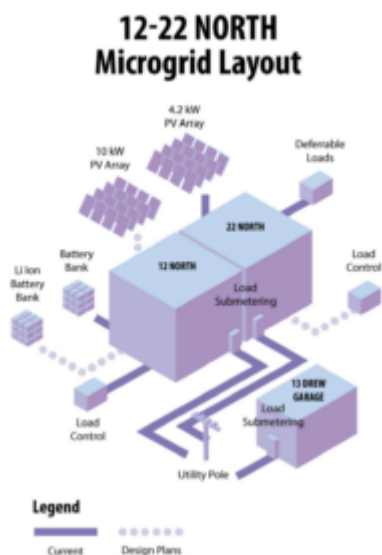


Distributed Energy Resource R&D Facility

[50 Internet Connected Technologies](#)

- Multiple data devices including weather stations, energy submetering (kWh and BTU), indoor air quality sensors, cameras
- Moving devices to streaming MQTT messaging protocol as needed

[Microgrid and VPP Testbed](#)



3 clustered service entrances, existing and planned PV, Existing and planned Storage, Flexible Loads, EV charger.

[Facilities](#)

[FACILITIES-12-22North DER Testbed 2021_02_27](#)

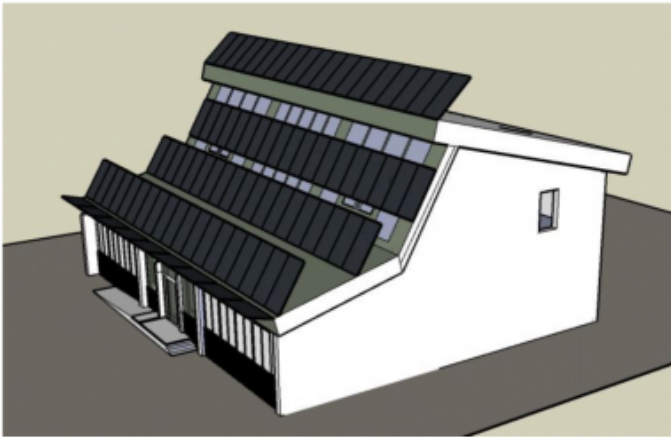
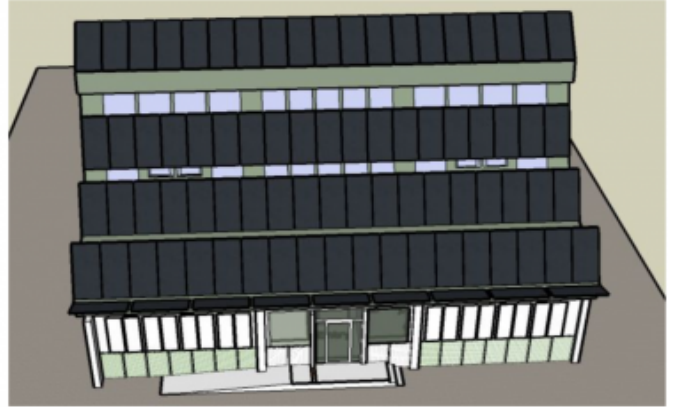
[Communications](#)

- Burlington Telecom Business Class Internet. Jacks and WiFi in all offices. Dedicated subnets available.
- LoRaWAN node and coverage in the [IoT Conduit Waterfront Wireless Sensor Infrastructure](#) for Smart City applications. Game changing technology and part of [The Things Network](#) with international coverage of over 10,000 gateways.
- LoLa (future) as part of [US Ignite Gigabit Community](#)

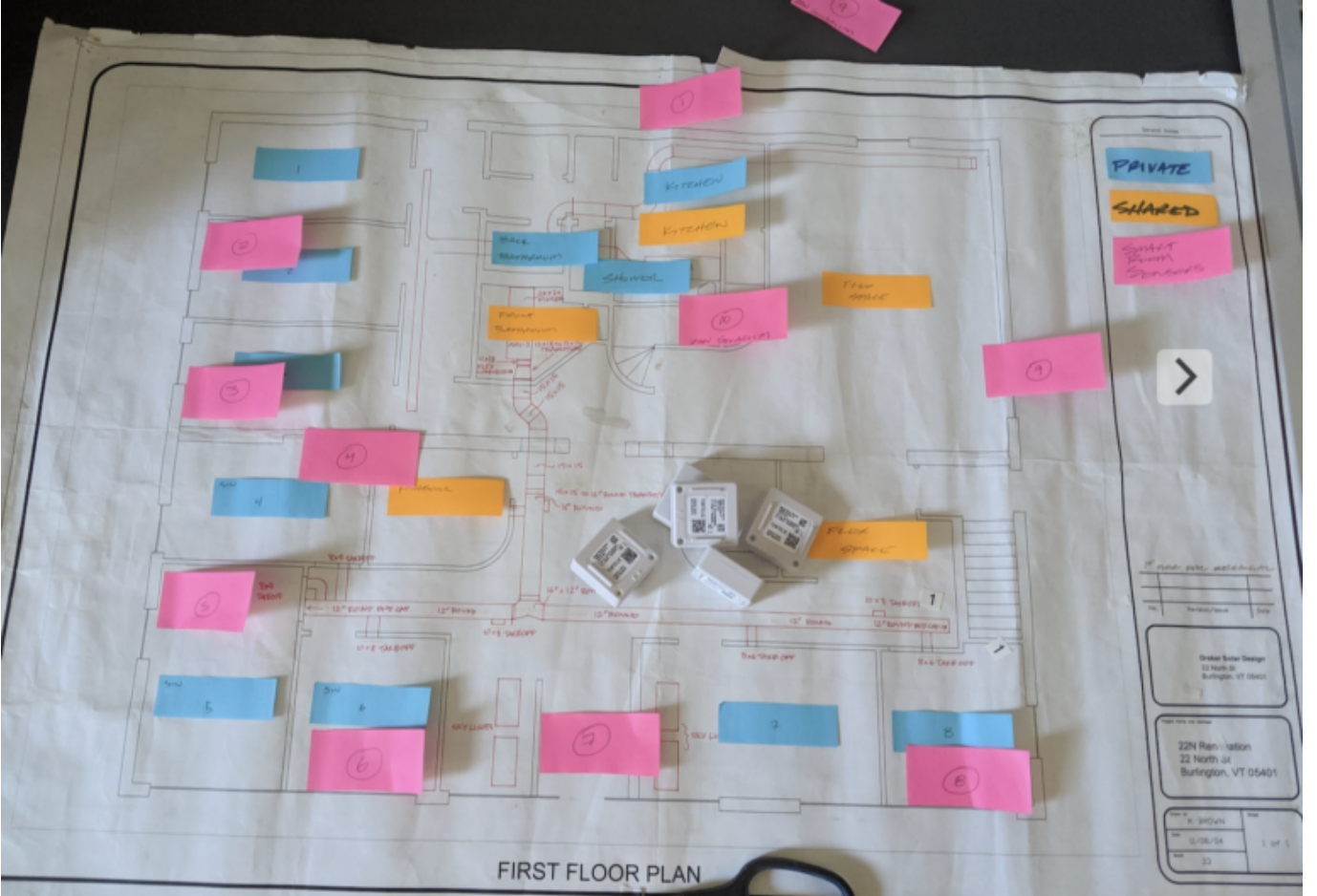
[Connections](#)

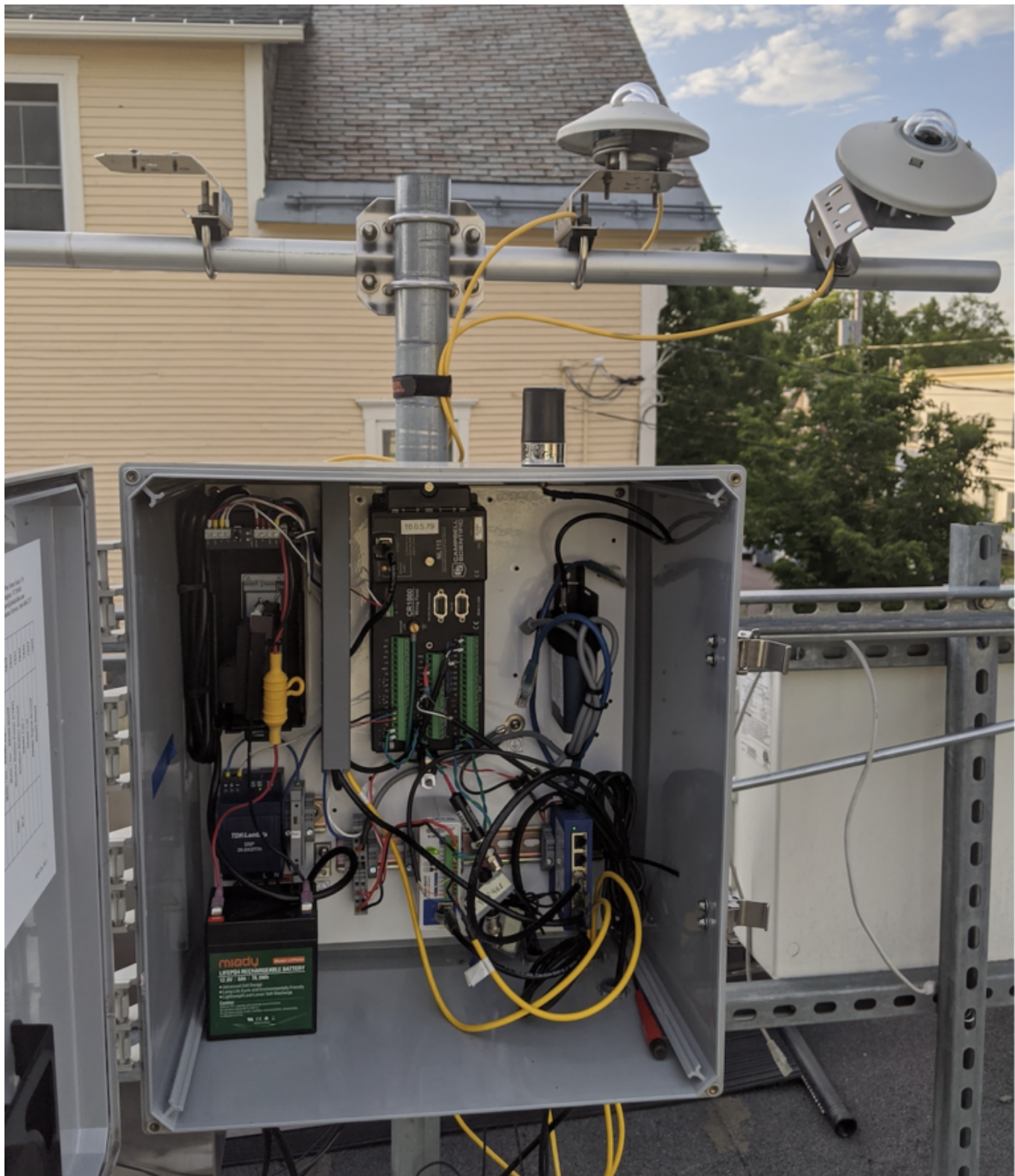
- Building tenant IoT Conduit is an official [National Renewable Energy Lab American Solar Prize Network Connector](#)
- Talent pipeline in skilled VT tech ecosystem including domain experts in energy, water and agriculture including [IoT Conduit Professional Partners](#).

- Strong relationship with [University of Vermont Office of Vice President for Research](#). Win-win introductions made to quality UVM researchers.















Previous
Next